

SMART SERIES



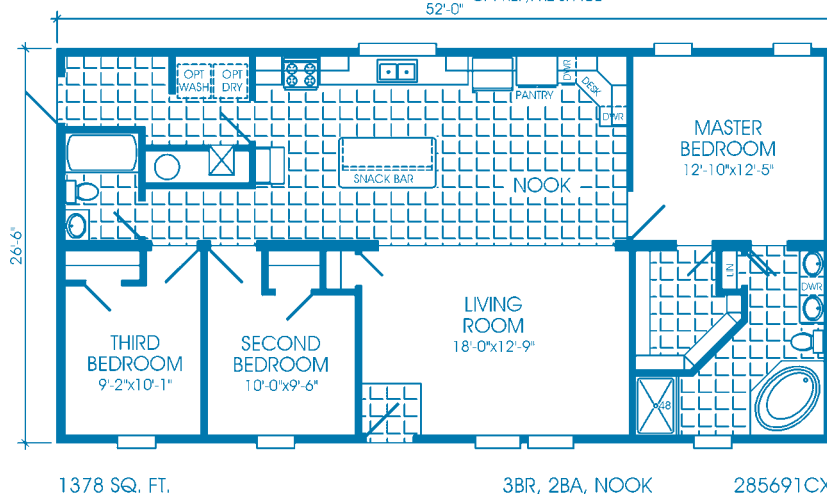
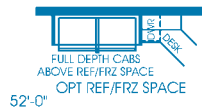
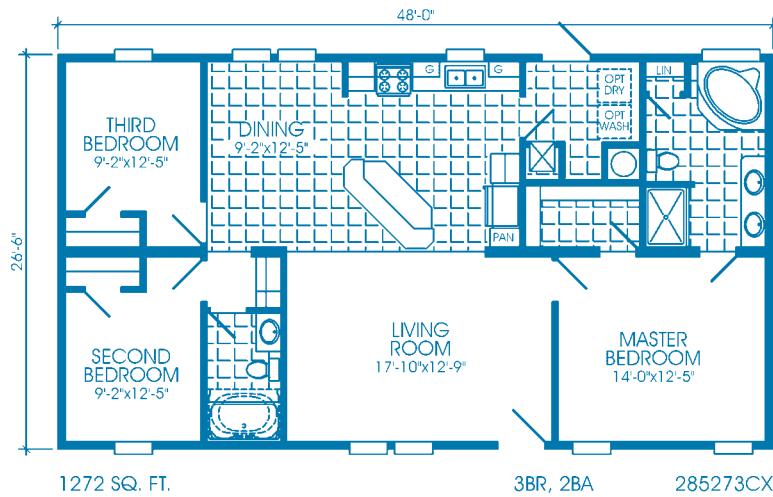
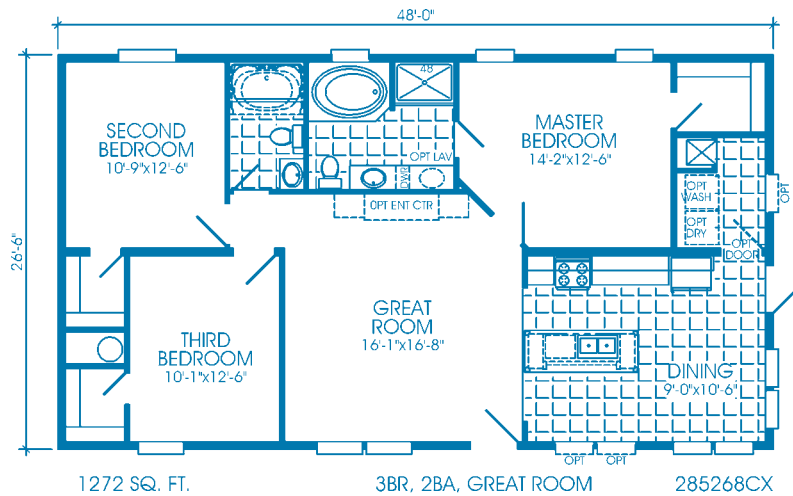
1

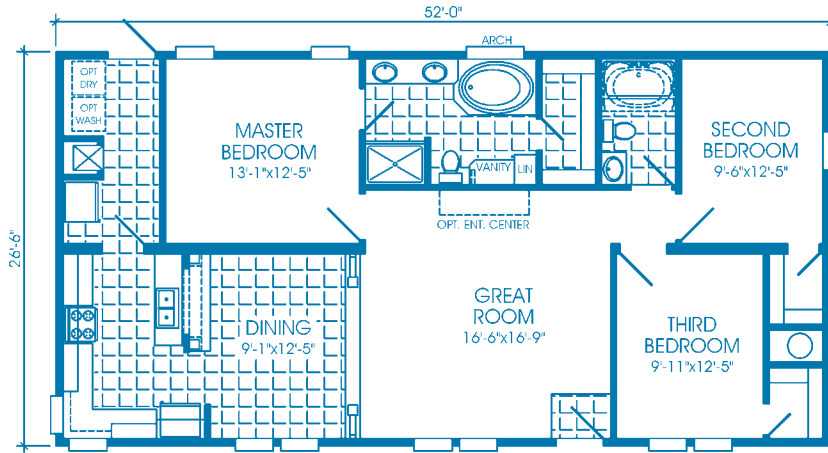
Waverlee

PRIDE. QUALITY. SATISFACTION.
With the exclusive FIVE YEAR WARRANTY.

Smart Series (HUD)



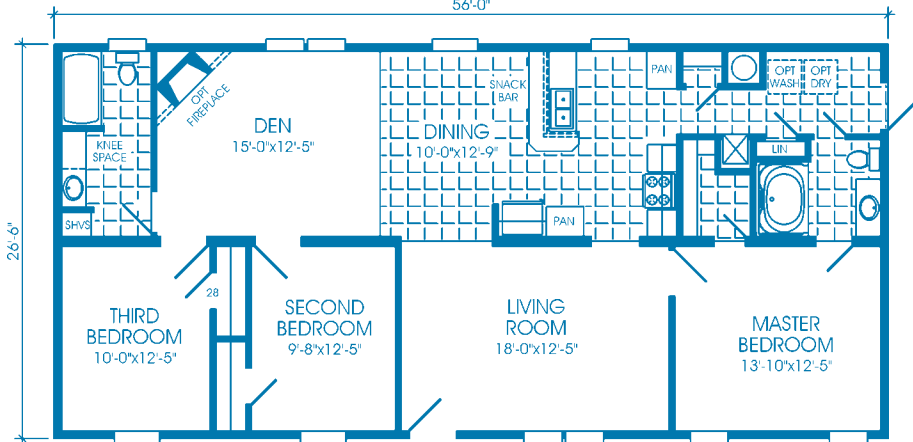
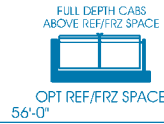




1378 SQ. FT.

3BR, 2BA, GREAT ROOM

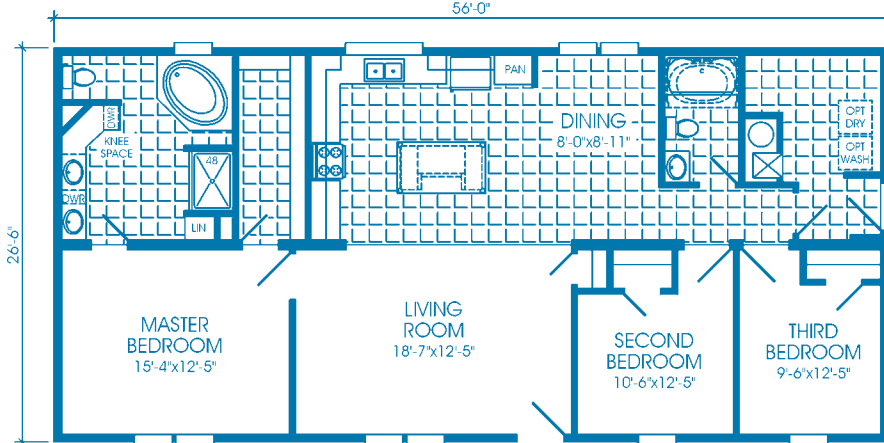
285692CX



1484 SQ. FT.

3BR, 2BA, DEN

2860122CX



1484 SQ. FT.

3BR, 2BA

2860123CX

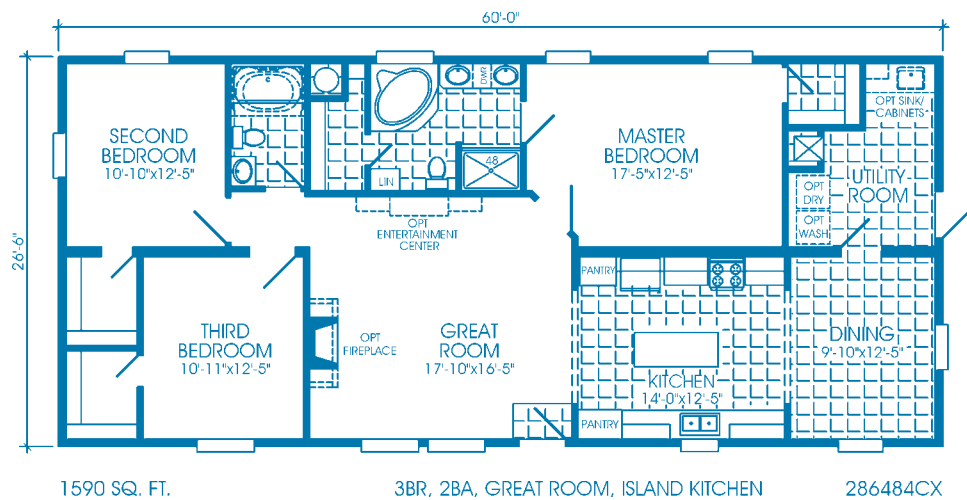
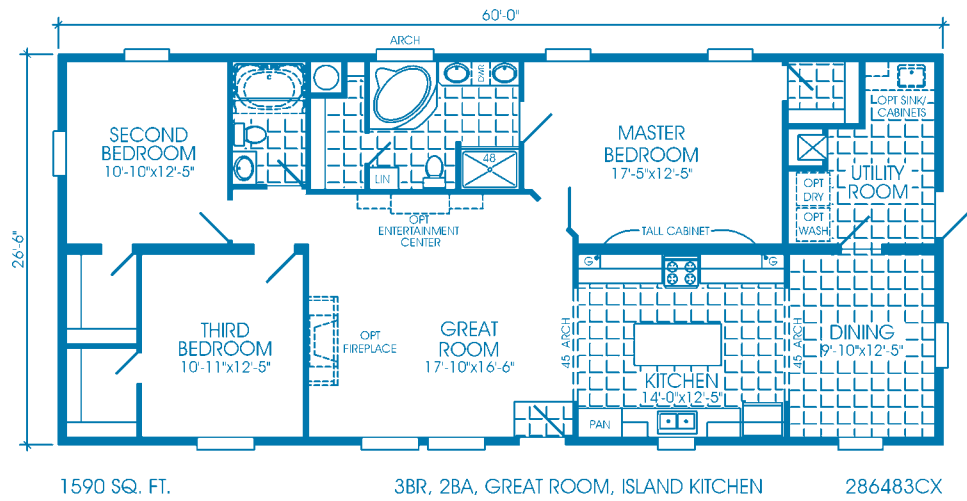
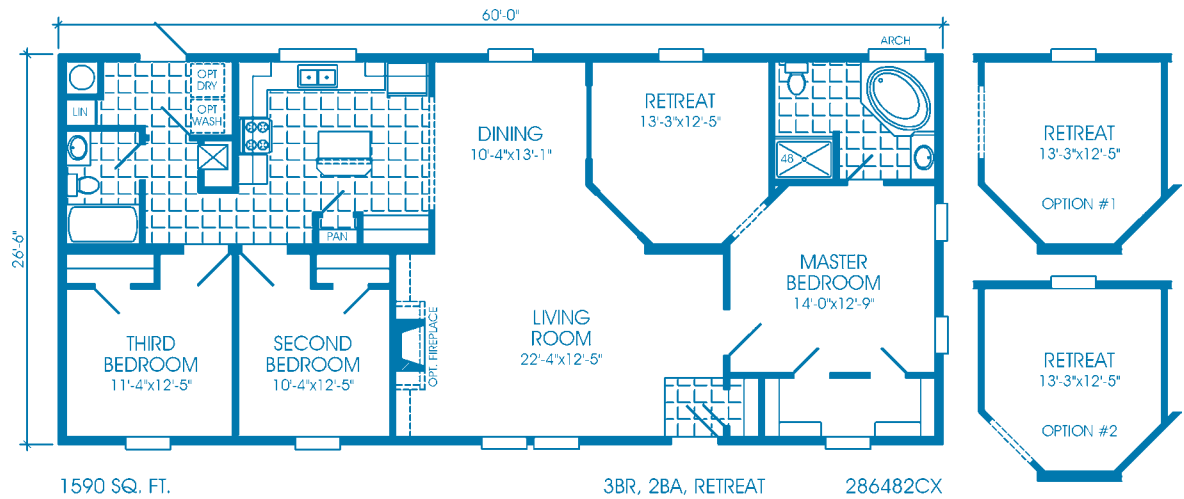
3

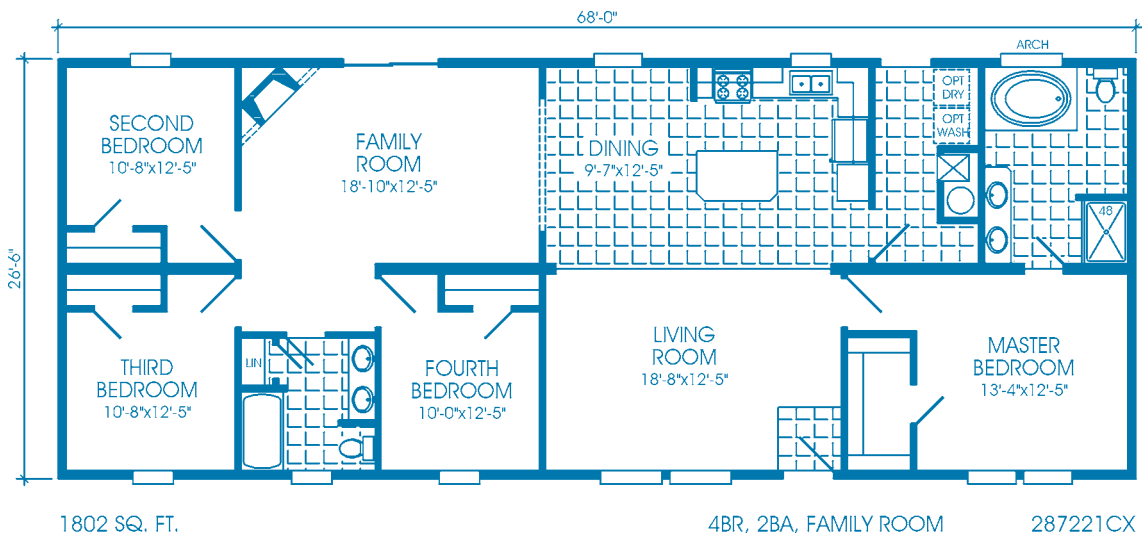
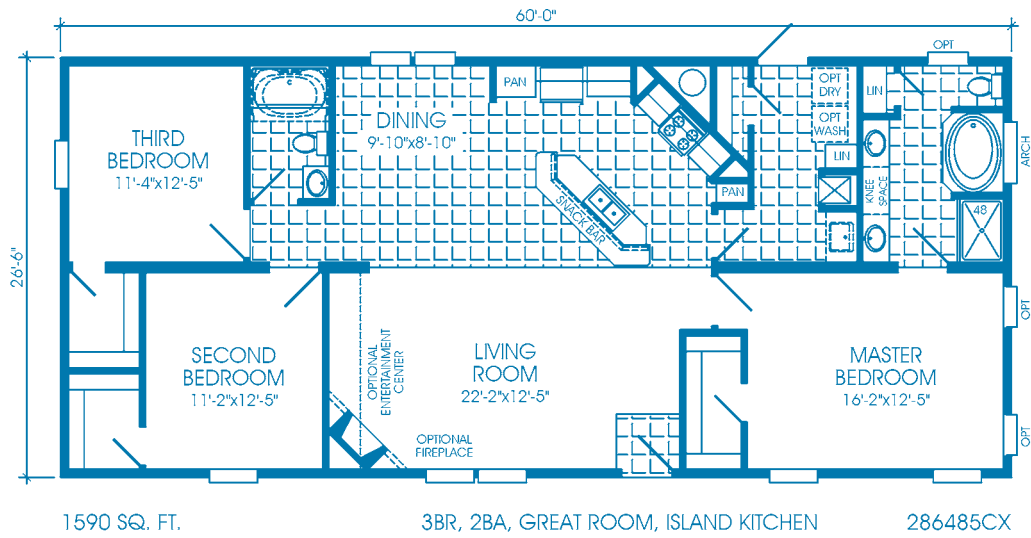
Waverlee

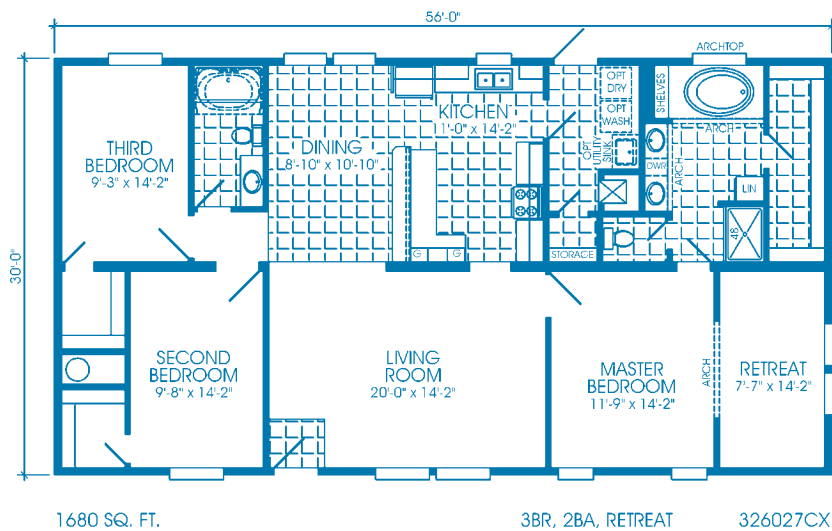
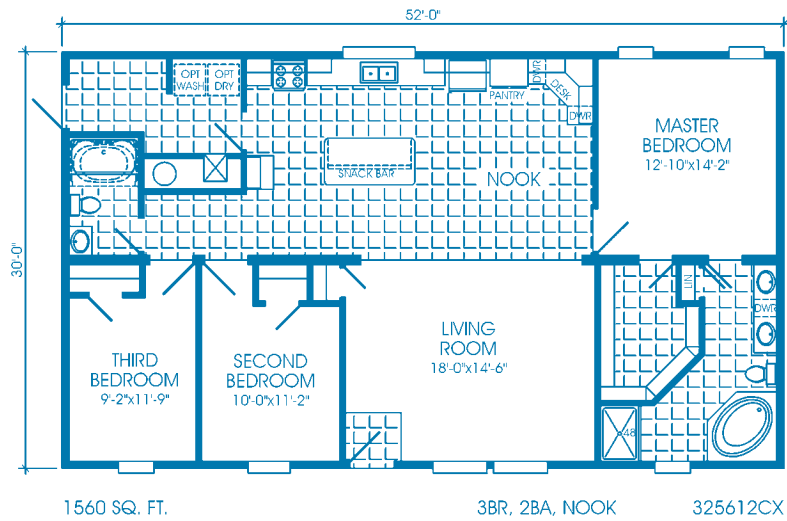
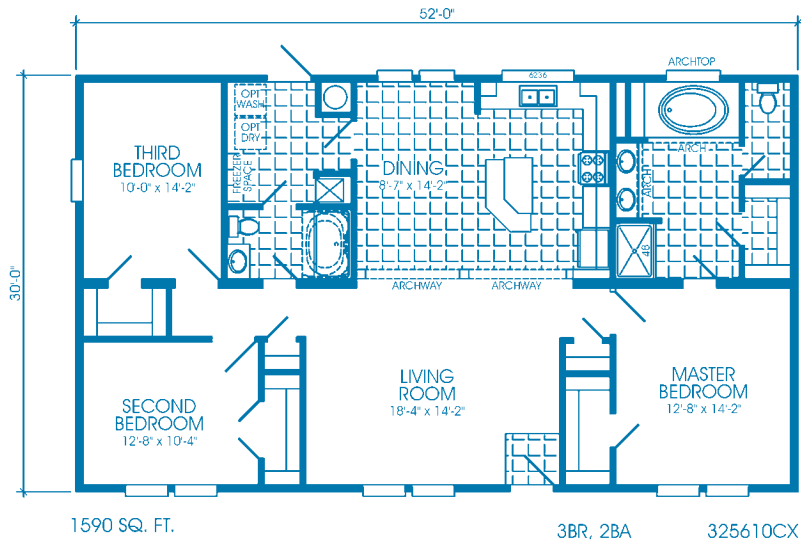
PRIDE. QUALITY. SATISFACTION.
With the exclusive FIVE YEAR WARRANTY.

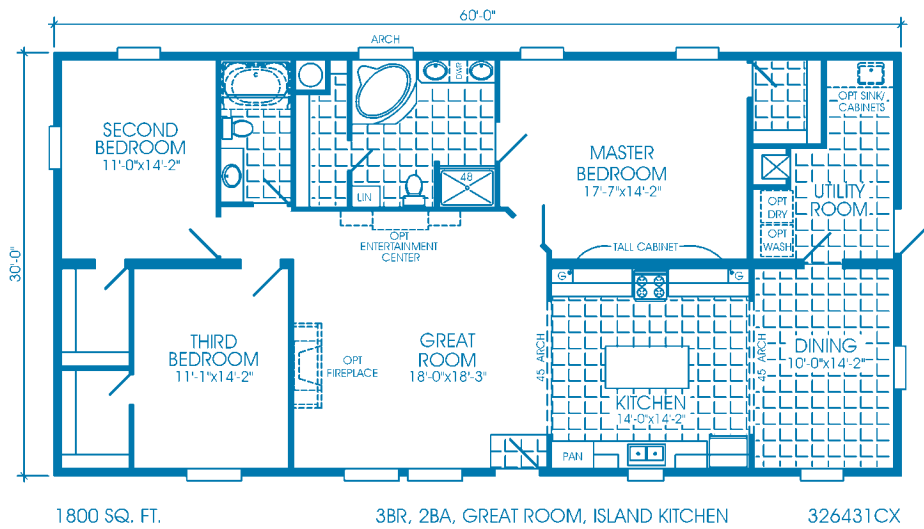
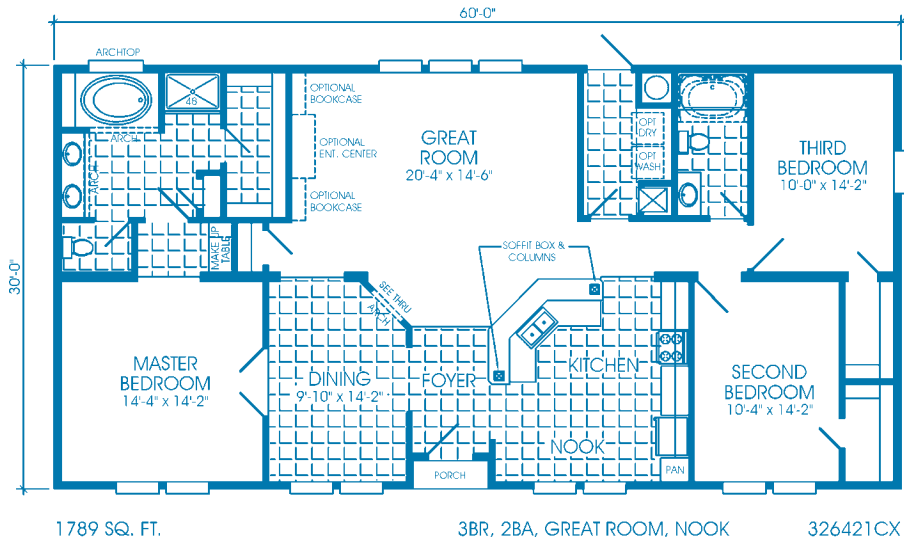
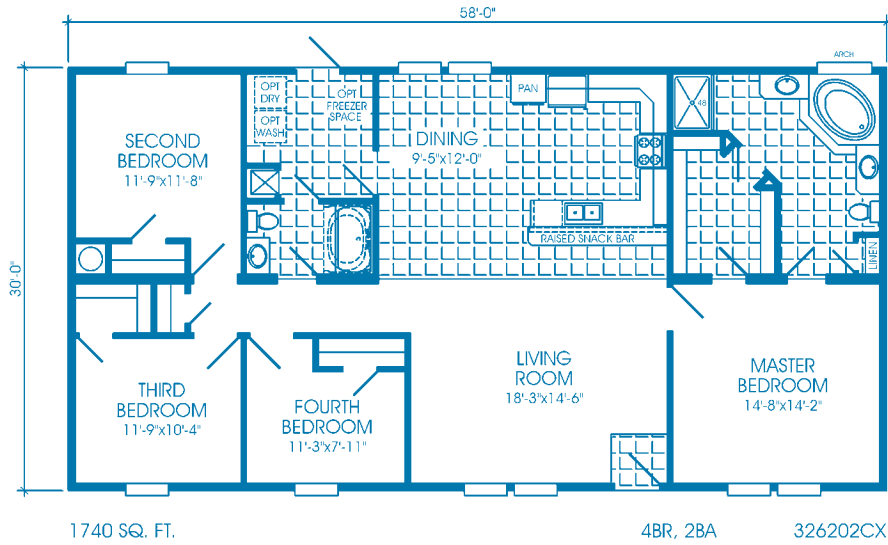
Smart Series (HUD)

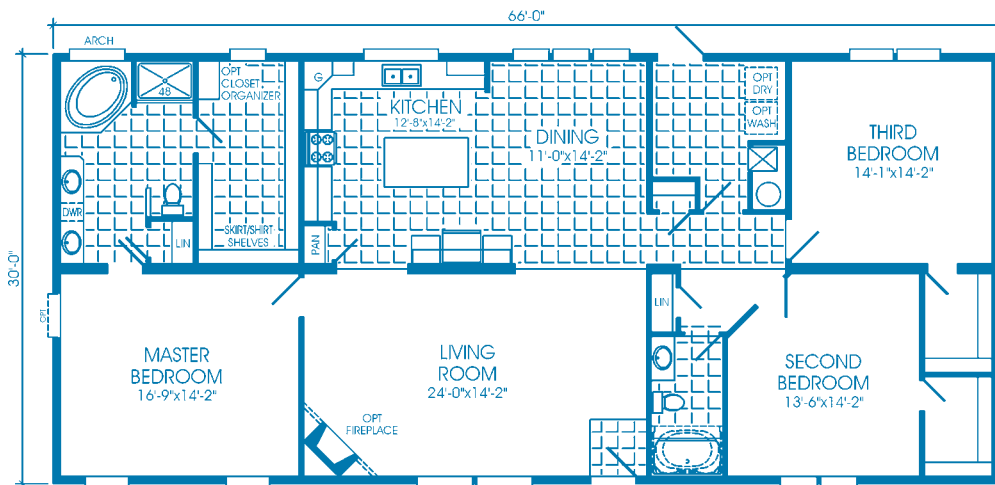








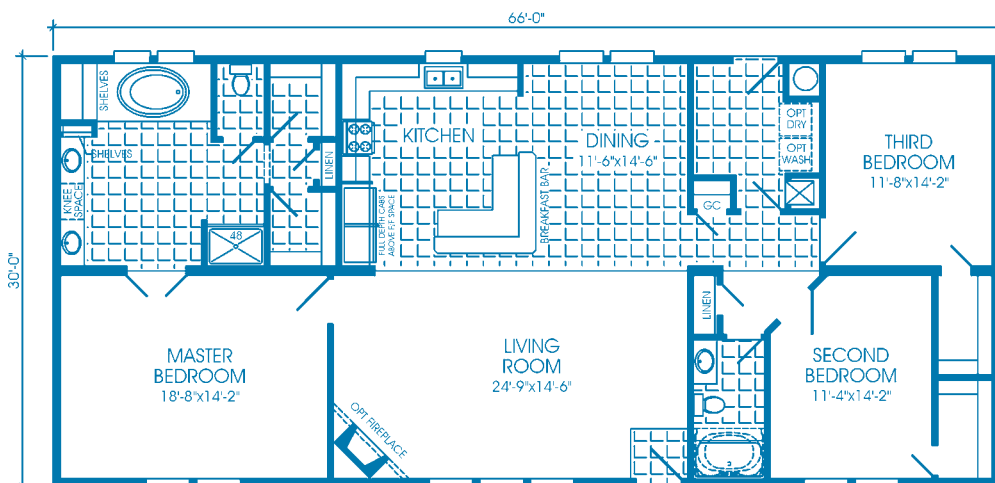




1980 SQ. FT.

3BR, 2BA, ISLAND KITCHEN, LUXURY BATH

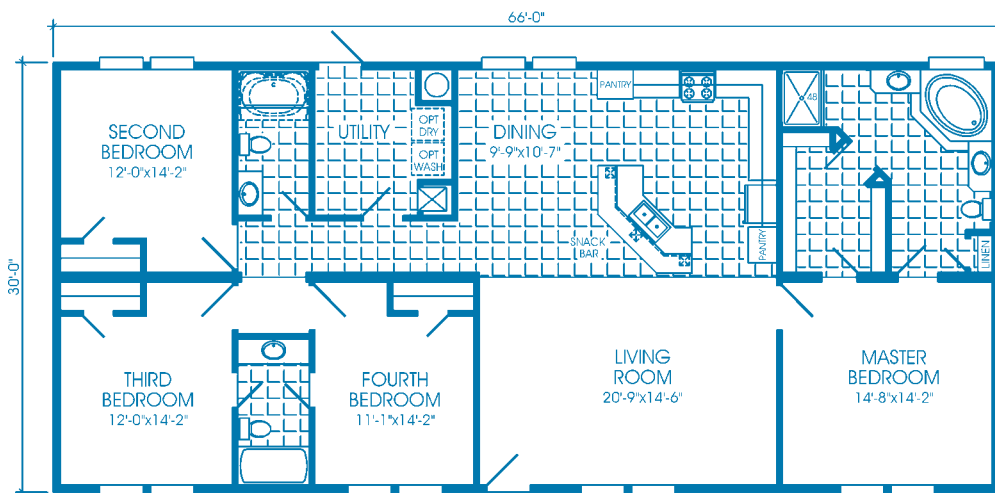
327019CX



1980 SQ. FT.

3BR, 2BA, BREAKFAST, MASTER SUITE

327021CX



1980 SQ. FT.

4BR, 3BA, MASTER SUITE

327022CX

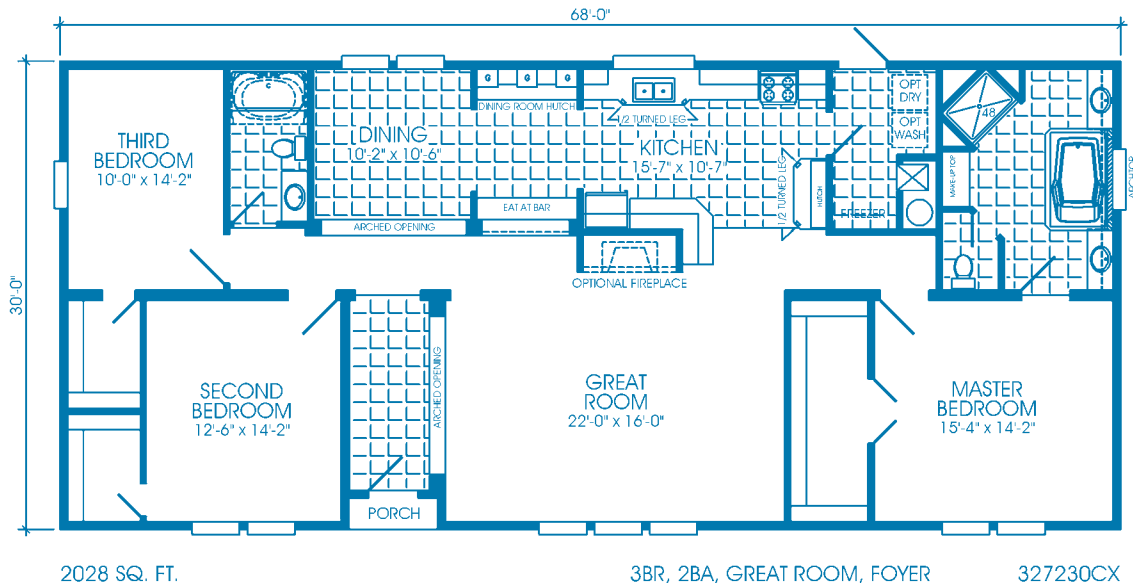
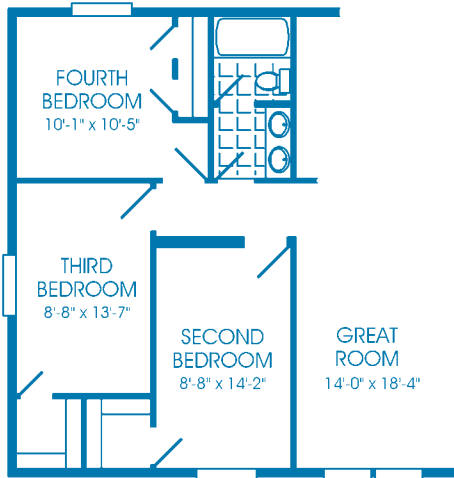
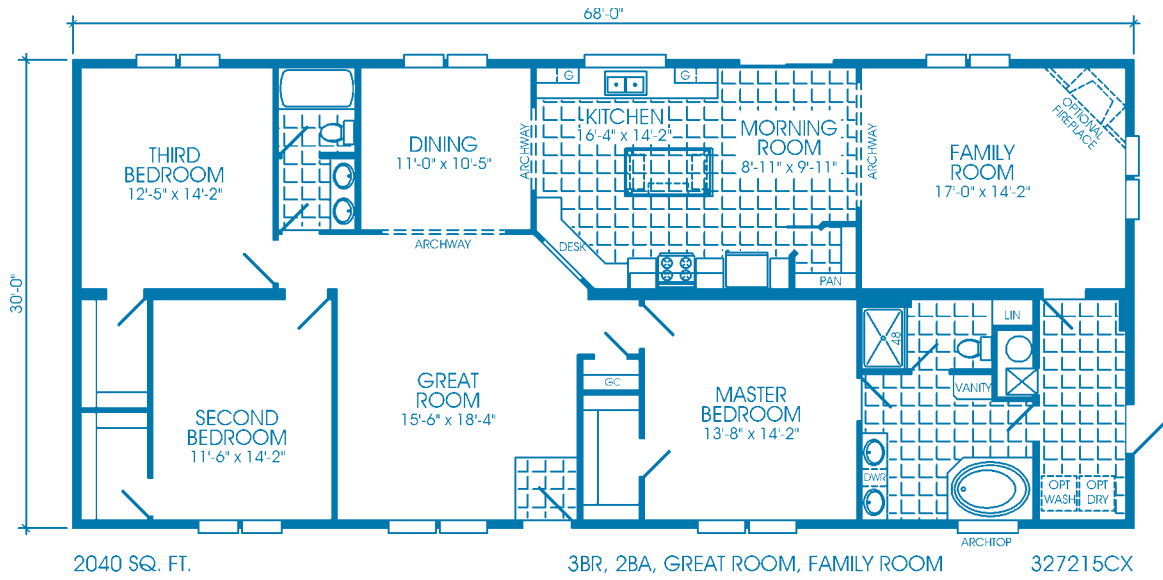
8

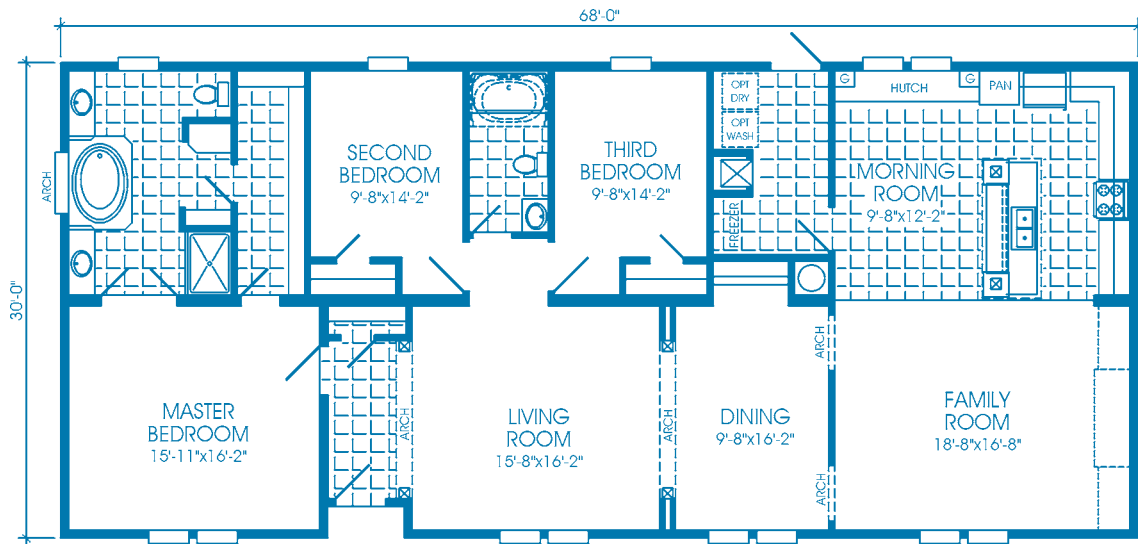
Waverlee

PRIDE. QUALITY. SATISFACTION.
With the exclusive FIVE YEAR WARRANTY.

Smart Series (HUD)



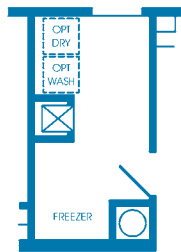




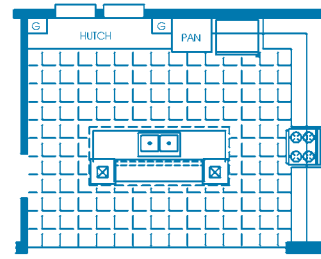
2030 SQ. FT.

3BR, 2BA, FAMILY ROOM

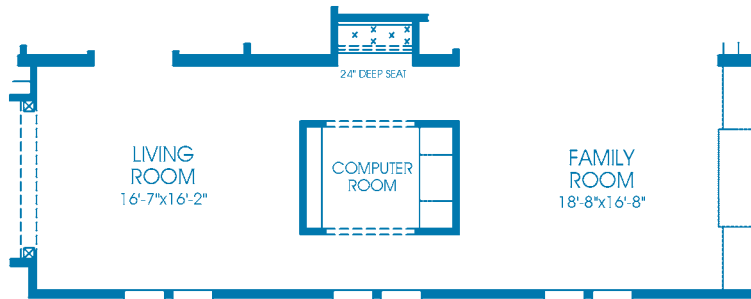
327231CX



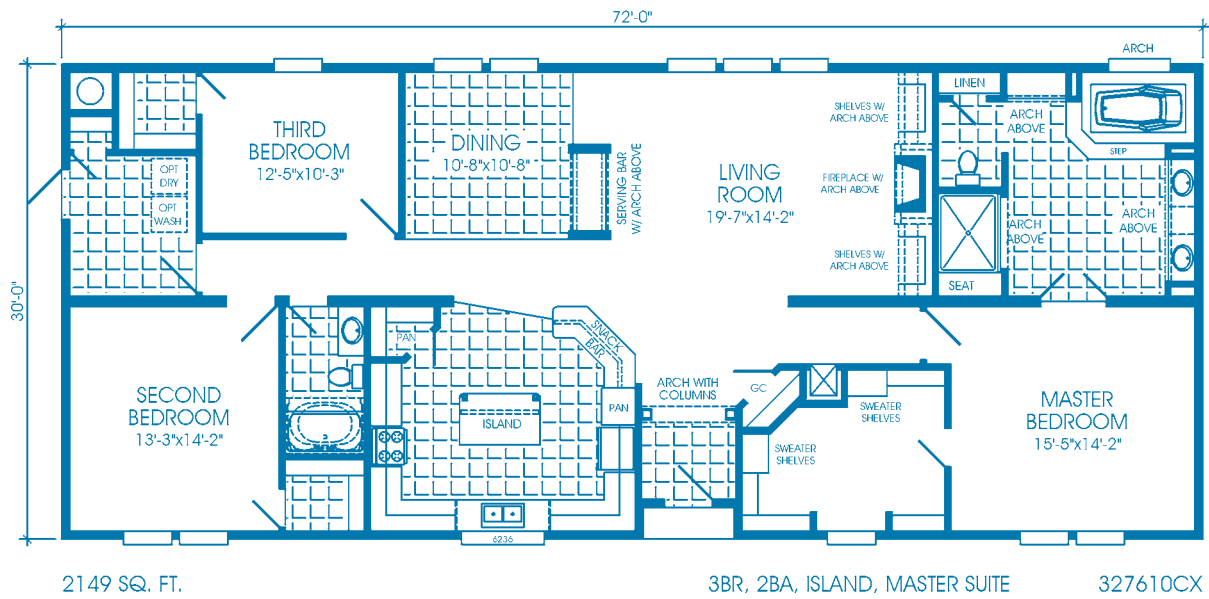
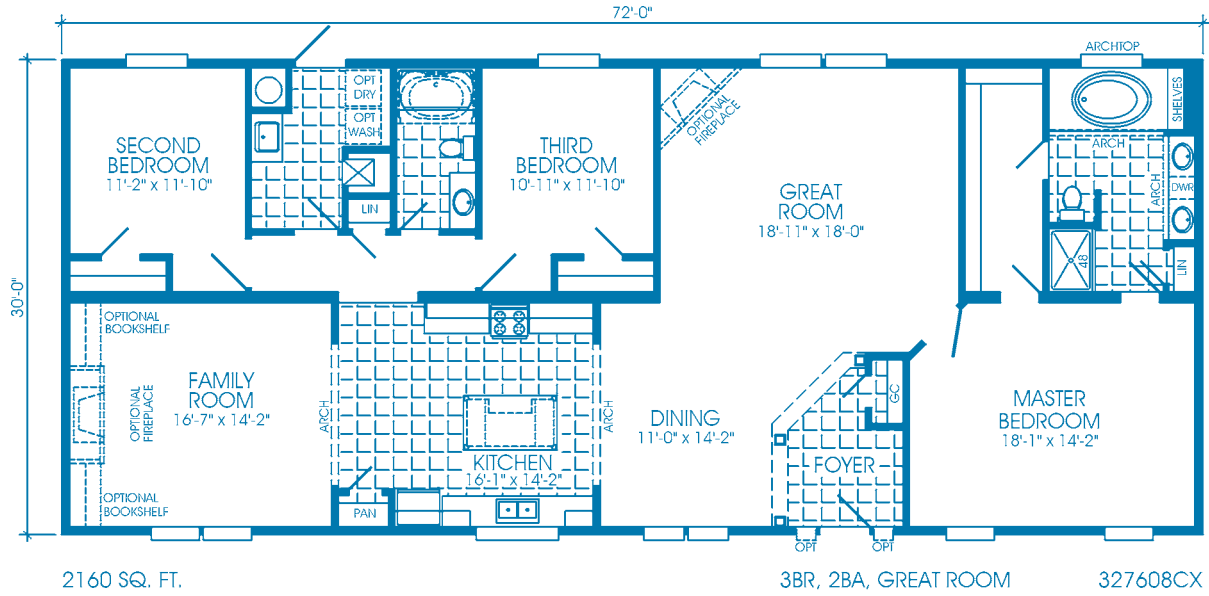
OPTIONAL UTILITY ROOM
FOR 327231CX

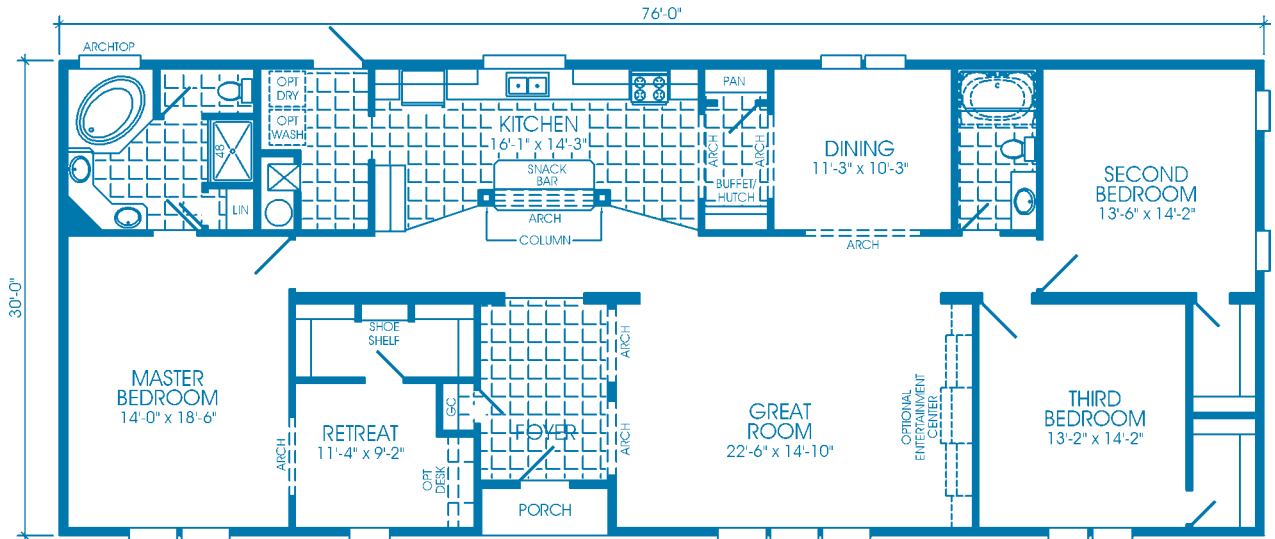


OPTIONAL KITCHEN
FOR 327231CX



OPTIONAL COMPUTER ROOM
FOR 327231CX

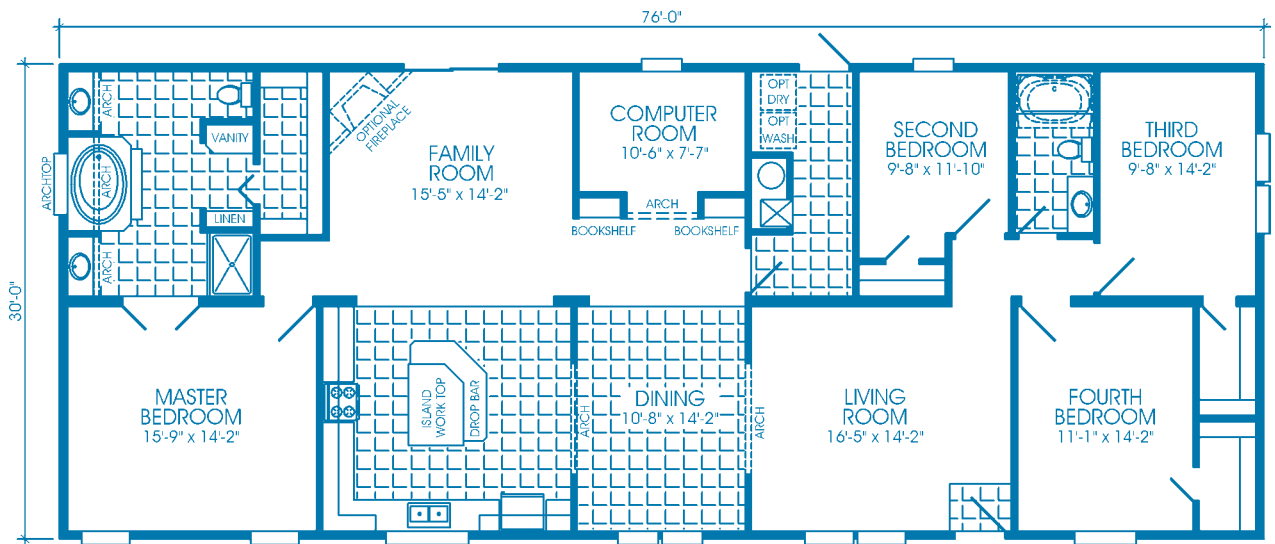




2256 SQ. FT.

3BR, 2BA, GREAT ROOM, RETREAT

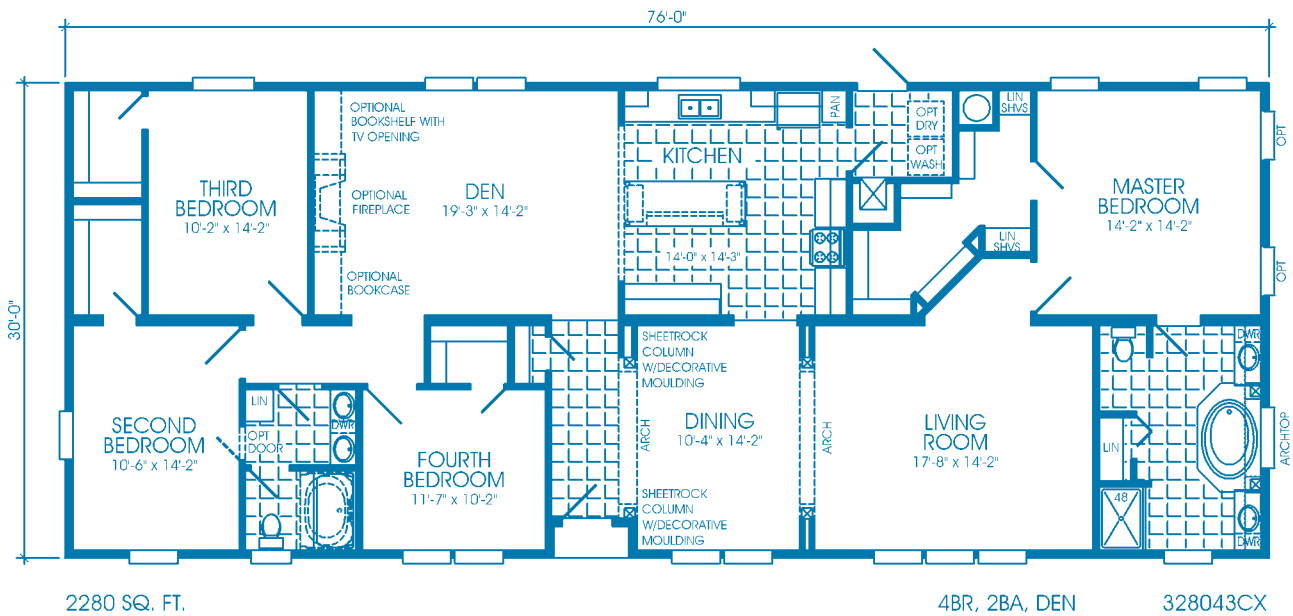
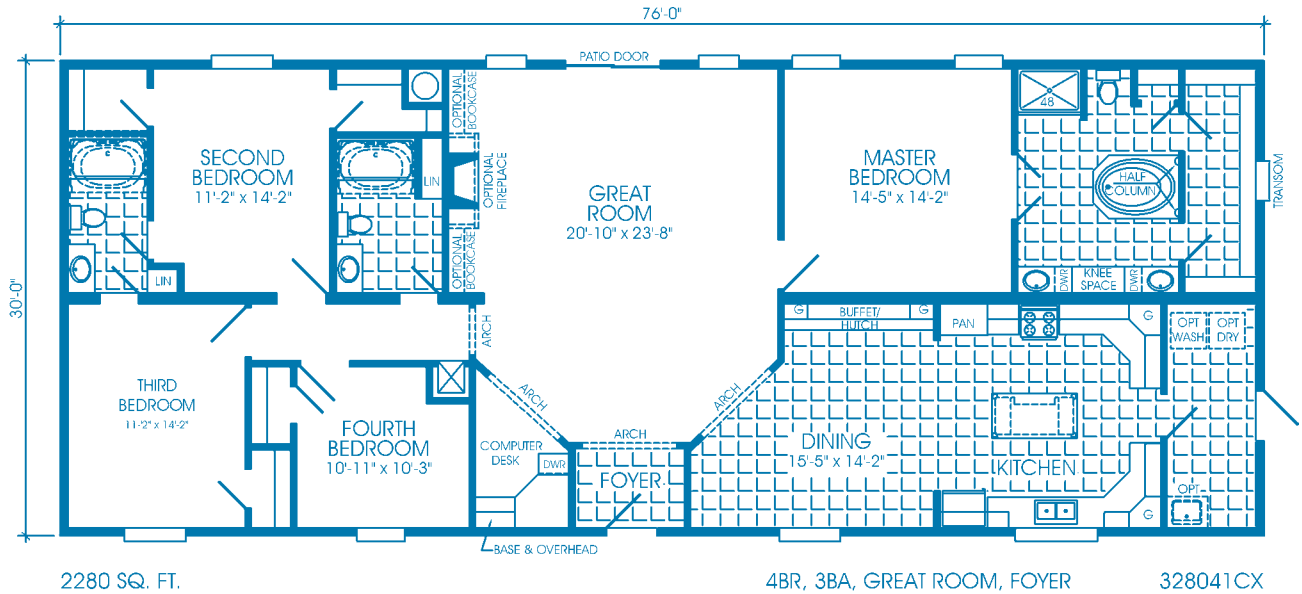
328035CX

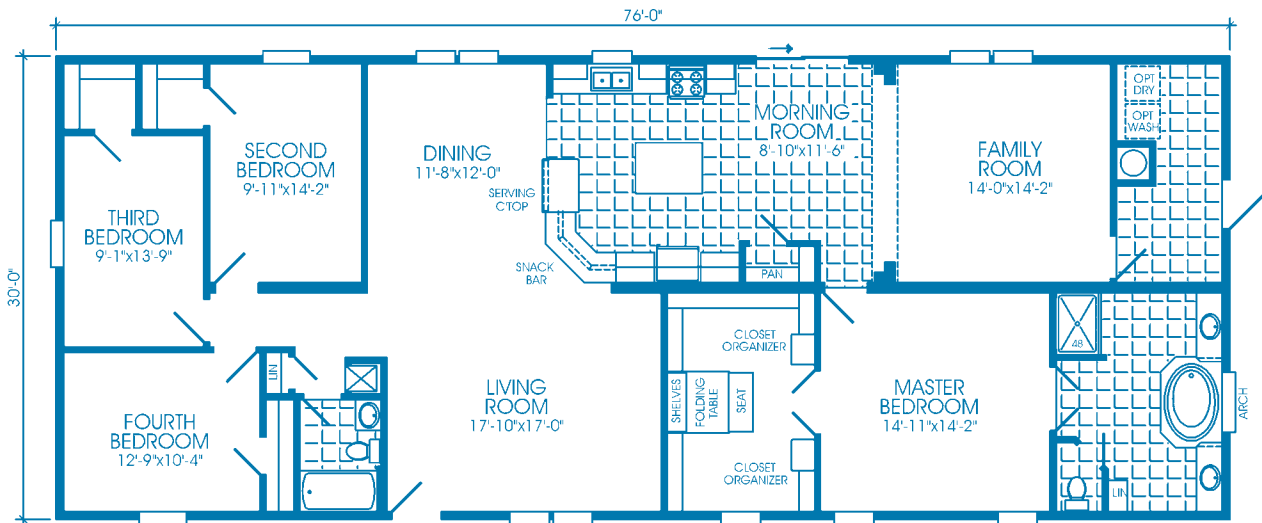


2280 SQ. FT.

4BR, 2BA, FAMILY ROOM, COMPUTER ROOM

328039CX

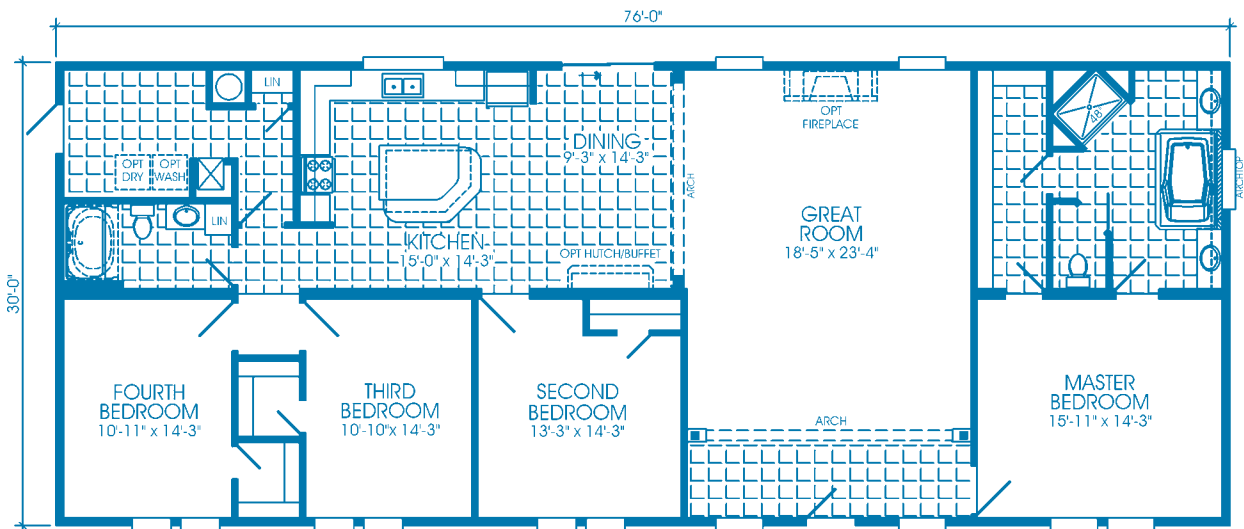




2280 SQ. FT.

4BR, 2BA, FAMILY ROOM, MASTER SUITE

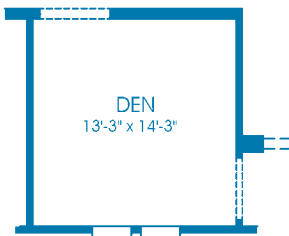
328045CX



2280 SQ. FT.

4BR, 2BA, GREAT ROOM

328046CX



OPTIONAL DEN
FOR 328046CX



WAVERLEE HOMES SMART SERIES (AM)

STANDARD FEATURES

KITCHEN

Coil Eye Electric Range (Black)
22' SXS Refrigerator with Ice & Water in Door (Black)
Dishwasher (Black)
Empire Oil Rubbed Bronze Color 8" Goose Neck Faucet
White Acrylic Kitchen Sink
30" Power Vented Range Hood with Light
Mud Cap Ceramic Tile Countertop Edging
4" Ceramic Tile Backsplash
Built-In Spice Rack Over Range
Plantation Oak Custom Cabinets
Drawer Over Door Base Cabinets
Concealed Cabinet Door Hinges
(2) Adjustable 3/4" Center Shelves in Overhead Cabinets
Lined Overhead Cabinets Bottom & Center Shelves in Base Cabinets
Cereal Shelf Above Refrigerator
Deluxe Oil Rubbed Cabinet Knobs & Pulls
Wood Cabinet Stiles
30" Flat Panel Cabinet Doors on Overhead Cabinets
2" Wide Crown Molding Trim Above Cabinets
GFI Protected Receptacles

INTERIOR DESIGN

Alabaster Glass Oil Rubbed Light Fixtures
Oil Rubbed Ceiling Fan in Living Room & Kitchen
Pendent Light Chandelier in Dining Room
2"X4" Interior Studs 16" OC
8' Residential Ceilings Throughout
Residential Stomped Ceilings
Country Classic Drapery Package with 2" Plantation Blinds Throughout
1/2" Tape & Textured Walls Throughout
Cathedral Arched Openings

11 std features - Smart Series (AM).doc

4 1/4" Baseboard Molding Throughout
Saxony Carpet by Shaw
6# Rebond Carpet Pad
Omega® 16"X16" Tile in Kitchen, Utility & Baths
Carpet Bar at Tile Areas
Deluxe White Metal Closet Shelving
Washer/Dryer Shelf
White 6-Panel Interior Doors
36" Wide Doors to Bedrooms
Wide White Residential Door Casing Throughout (Except Closets)
Solid Wrapped Door Jambs
Satin Door Knobs
Deluxe Satin Floor Mounted Door Stops
5" White Crown Molding Throughout (Except Closets)
(2) Deluxe Door Hinges on All Doors
Wide Door Stop 3-Sides on All Interior Doors
Deluxe White Window Trim
200 Amp Electric Service
40 Gallon "Sandhog" Water Heater
Battery Back-Up Smoke Detectors in All Bedrooms & Living Areas
Water Shut-Off Valves at All Sinks & Commodes

ENERGY EFFICIENCY

Nordyne Furnace - Gas or Electric
Heating or Cooling (Dual) 5-Wire Thermostat
Complete House Ventilation System
Energy Zone II Insulation: Floors R11, Walls R19 & Ceiling R25
60"Thermopane Windows with Grids – Most Windows

EXTERIOR DESIGN

Vinyl Siding with OSB Board or Plywood Backing
Deluxe Raised Panel Shutters Hitch End & Front Door Side
Steel I-Beam Frame
3/4" OSB Floor Decking

2"X6" Floor Joist 16" OC on 28" Wide Models
2"X8" Floor Joist (16" OC on 32' Wides)
Detachable Hitch
Shingled Roof with Rafters: 16" OC 32' Wides
24" OC 28' Wides & All Hinged Roofs
Full 10" Overhangs
Cemplank Fascia with Vented Eaves
20' Dormer
2"X6" Exterior Wall Studs 16" OC with 2"X6" Top & Bottom Plates
36X80 Elixir Steel Front Door with Wood Jambs & Full View Storm
36X80 Elixir Steel 9-Lite Rear Door
Dead Bolt Locks Front & Rear Door
Black Torch Light All Exterior Doors

BATHROOM DESIGN

Oil Rubbed Bronze Faucets
China Lav Bowls in All Baths
Ceramic Edging & 4" Backsplash on Lavs & Tub Bases
Arched Window in Master Bath in Most Models
Fiberglass Soaker or Corner Tub in Master Bath
48" Fiberglass Shower Stall with Door in Master Bath
60" Fiberglass Tub/Shower in Guest Bath
Oil Rubbed Classic 2-Arm Vanity Light Over All Bath Sinks
Decorative Wood Framed Mirrors Above All Sinks
Exhaust Fan with Light in All Baths
Privacy Lock on All Bathroom Doors
Pex Water Lines
Elongated Commodes with Wood Seats
GFI Protected Receptacles

Effective: 02/25/11
Rev. 02/25/11

AL-AM-11 Issued: 3/11/11