

Go Series

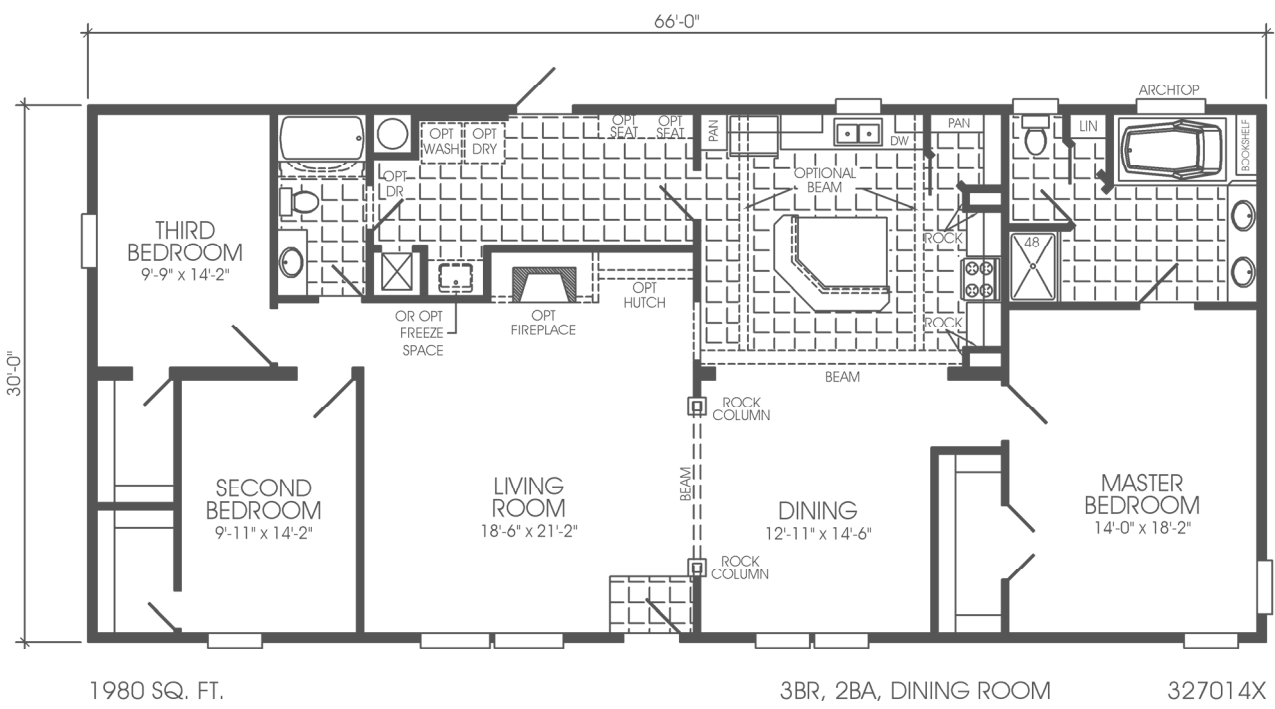
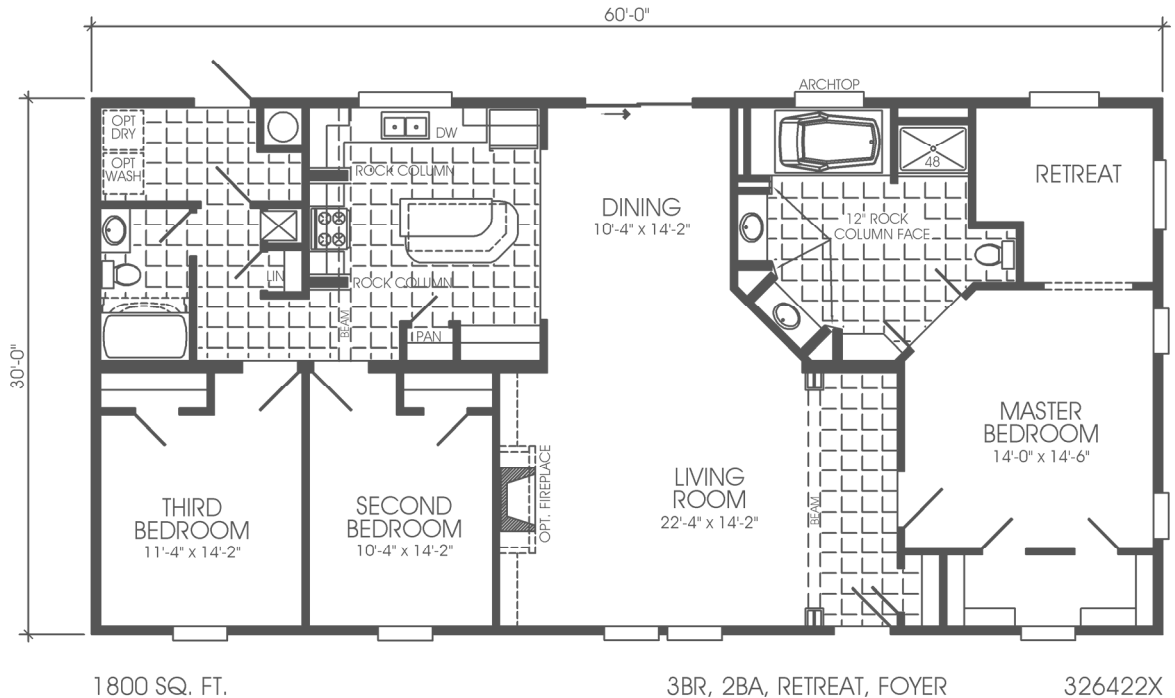


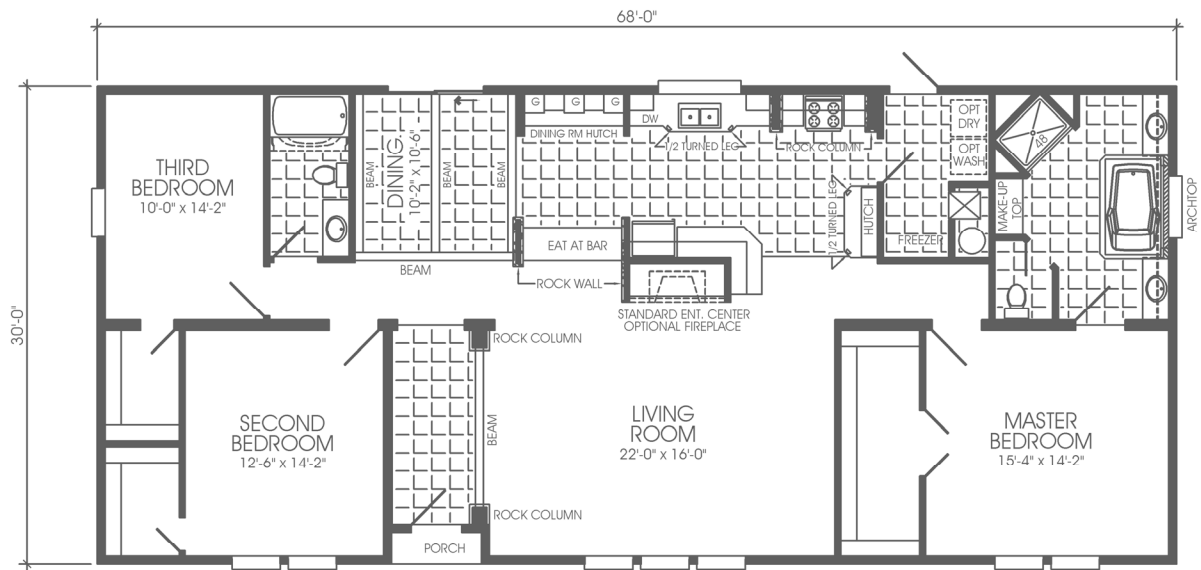
Waverlee

PRIDE. QUALITY. SATISFACTION.
With the exclusive FIVE YEAR WARRANTY.
www.waverleehomesinc.com

Go Series



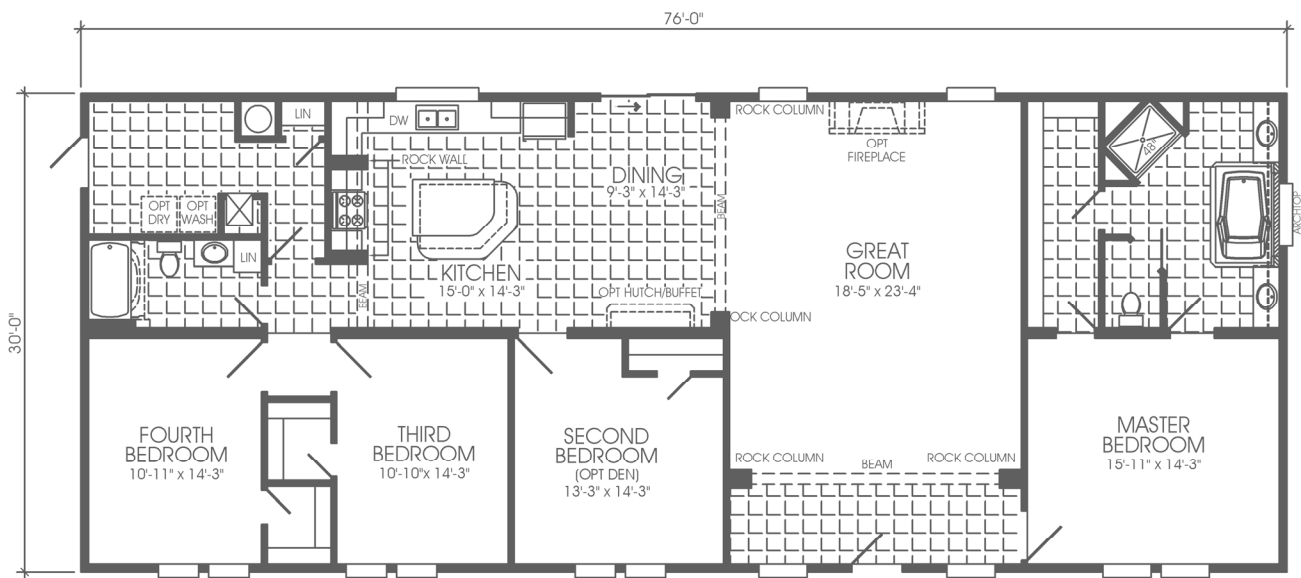




2028 SQ. FT.

3BR, 2BA, DINING ROOM, FOYER

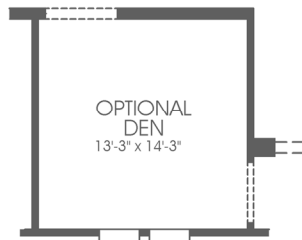
327225X



2280 SQ. FT.

4BR, 2BA, GREAT ROOM, ISLAND KITCHEN

328044X



WAVERLEE HOMES

“GO” DOUBLEWIDE (GO SERIES)

KITCHEN

Smooth Top Self-Cleaning Electric Range
 22' SXS Refrigerator with Ice & Water in Door
 Dishwasher
 Empire Oil Rubbed Bronze 8" Goose Neck Faucet
 White Acrylic Kitchen Sink
 30" Power Vented Range Hood with Light
 Mud Cap Ceramic Tile Countertop Edging
 4" Ceramic Tile Backsplash
 Rock Column Each Side of Range
 Vintage Java Oak Custom Cabinets
 Drawer Over Door Base Cabinets
 Large Drawer Stack for Pots & Pans
 Concealed Cabinet Door Hinges
 2 Adjustable Center Shelves in All Overhead Cabinets
 Lined Overhead Cabinets
 Bottom & Center Shelves in Base Cabinets
 Cabinets Above Refrigerator
 Center & Bottom Shelves in All Cabinets
 Deluxe Oil Rubbed Cabinet Knobs & Pulls
 Wood Cabinet Stiles
 30" Raised Panel Cabinet Doors on Overhead Cabinets
 2" Wide Crown Molding Trim Above Cabinets
 GFI Protected Receptacles

INTERIOR DESIGN

Alabaster Glass Oil Rubbed Light Fixtures
 2 Stem Lights Over Islands with Tiffany Globes
 Tiffany Glass Oil Rubbed 3-Arm Chandelier in Dining Room
 Oil Rubbed Ceiling Fan in Living Room & Family Room
 2 X 4 Interior Studs 16" OC
 Vaulted Ceilings Throughout
 Residential Stomped Ceilings
 "GO" Drapery Package with 2" Plantation Blinds Throughout
 Decorative Rods in Living Room, Dining Room & Master Bedroom
 Rock Columns with 6" Header, per Print

STANDARD FEATURES

1/2" Finished Drywall Throughout
 Cathedral Arched Openings
 4 1/4" Baseboard Molding Throughout
 Acclaim Saxony Carpet by Shaw®
 6# Rebond Carpet Pad
 Nafco® 16"X16" Tile in Utility & Bathrooms
 Laminated Wood Look Flooring in Kitchen & Entry
 Carpet Bar at Tile Areas
 Deluxe White Metal Closet Shelving
 Washer/Dryer Shelf
 Plumbed & Wired for Washer/Dryer
 White 6-Panel Interior Doors
 36" Wide Doors to Bedrooms
 Wide White Residential Door Casing Throughout (except Closets)
 Solid Wrapped Door Jambs
 Satin Single Lever Door Knobs
 Deluxe Satin Floor Mounted Door Stops
 4" Java Colored Crown Molding Throughout (except Closets)
 Deluxe Door Hinges (3) All Doors
 Wide Door Stop 3 Sides All Interior Doors
 Deluxe White Window Trim
 200 Amp Electric Service
 40 Gallon "Sandhog" Water Heater
 Water Heater On/Off Switch
 Battery Back-Up Smoke Detectors All Bedrooms & Living Area
 Water Shut-Off Valves at All Sinks & Commodes
 Whole House Water Shut-Off Valve

ENERGY EFFICIENCY

Nordyne Furnace - Gas or Electric
 Heating & Cooling (Dual) 5-Wire Thermostat
 Nordyne Ventilair III Air Exchange System
 Energy Zone II Insulation: Floors R11, Walls R19 & Ceiling R30
 60" Thermopane Windows with Grids - Most Windows

EXTERIOR DESIGN

Vinyl Siding with OSB Board or Plywood Backing
 Deluxe Raised Panel Shutters
 Hitch End & Front Door Side

Steel I-Beam Frame
 3/4" Plywood Floor Decking
 16" OC Floor Joist
 2" X 8" Floor Joist on 32' Wide Models
 Detachable Hitch
 Shingled Roof with Rafters 16" OC
 32' Wides (24" OC 28' Wides)
 Full 10" Overhangs
 Hardie Board Fascia with Vented Eaves
 20' Dormer
 2X6 Exterior Wall Studs 16" OC with 2" X 6" Top & Bottom Plates
 36X80 Elixir Steel Front Door with Wood Jambs & Full View Storm
 36X80 Elixir Steel 9 Lite Rear Door
 Dead Bolt Locks Front & Rear Door
 Black Torch Light All Exterior Doors
 GFI Weatherproof Receptacle
 Exterior Frostproof Faucets (2)

BATHROOM DESIGN

Custom Bath Vanities
 China Lav Bowls in All Baths
 Ceramic Edging & 4" Backsplash on Lavs & Tub Bases
 Arched Window in Master Bath
 Empire Oil Rubbed Bronze Faucets
 Fiberglass Soaker or Corner Tub in Master Bath
 48" Fiberglass Shower Stall with Door Master Bath in Most Models
 60" Fiberglass Tub/Shower Guest Bath
 Oil Rubbed Classic Vanity Light over Sink in All Baths
 Decorative Wood Framed Mirrors above All Sinks
 Exhaust Fan with Light All Baths
 Privacy Lock on All Bathroom Doors
 Pex Water Lines
 Elongated Commodes with Wood Seats
 GFI Protected Receptacles

09 std features - GO DWs.doc

Effective: 03/23/09
 Rev. 03/11/09

Model number includes the overall length of the home, including approximately 48" for the hitch. Some tires, wheels, axles, and other components may be reused after inspection. Floor width of model 12s is 141", 14s is 165", 16s is 186", 24s is 270", 28s is 318", 32s is 360", and 42s is 477" to allow for necessary road clearance. Interior dimensions are to the wall surface and based on 2x6 exterior walls. Square footage is based on overall outside floor dimension. All prices and specifications are subject to change without notice.

AL-GO-09 Issued: 3/15/09

Waverlee

PRIDE. QUALITY. SATISFACTION.
 With the exclusive FIVE YEAR WARRANTY.
www.waverleehomesinc.com

Go Series

